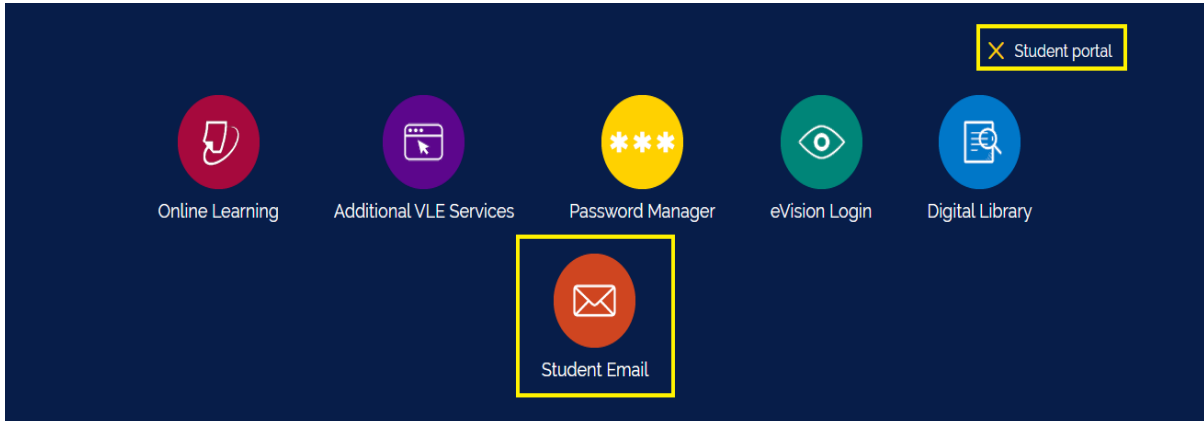


Downloading Microsoft Office



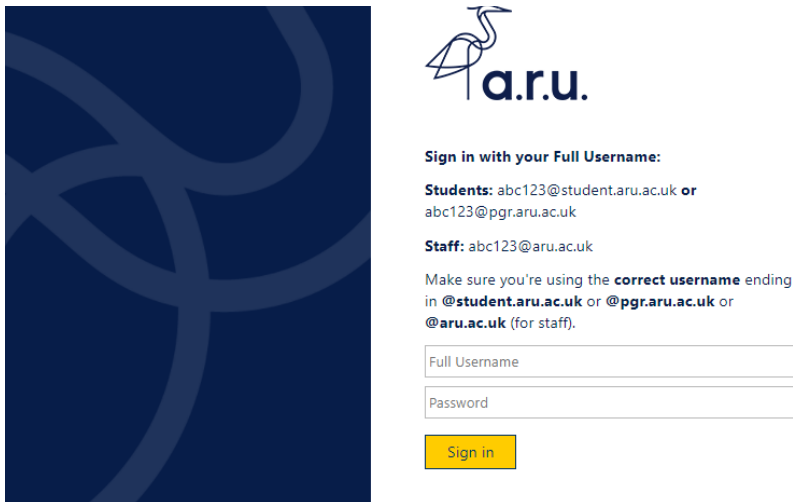
Step 1:

Go to <https://london.aru.ac.uk/> and select '**Student Portal**' to get access to all learning platforms, then click on '**Student Email**'.



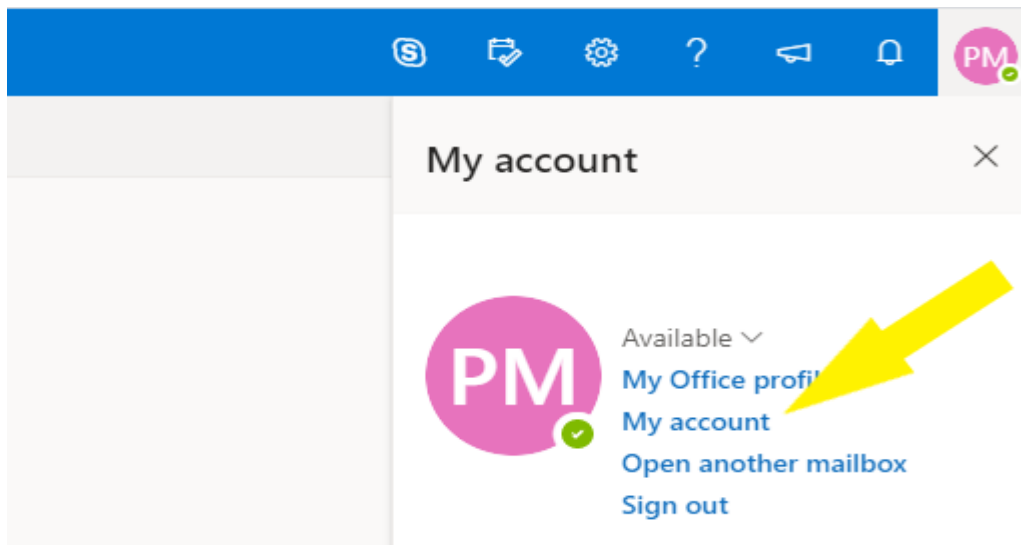
Step 2:

Login to your student email using your **e:Vision** username e.g. abc123@student.aru.ac.uk and your **e:Vision** password



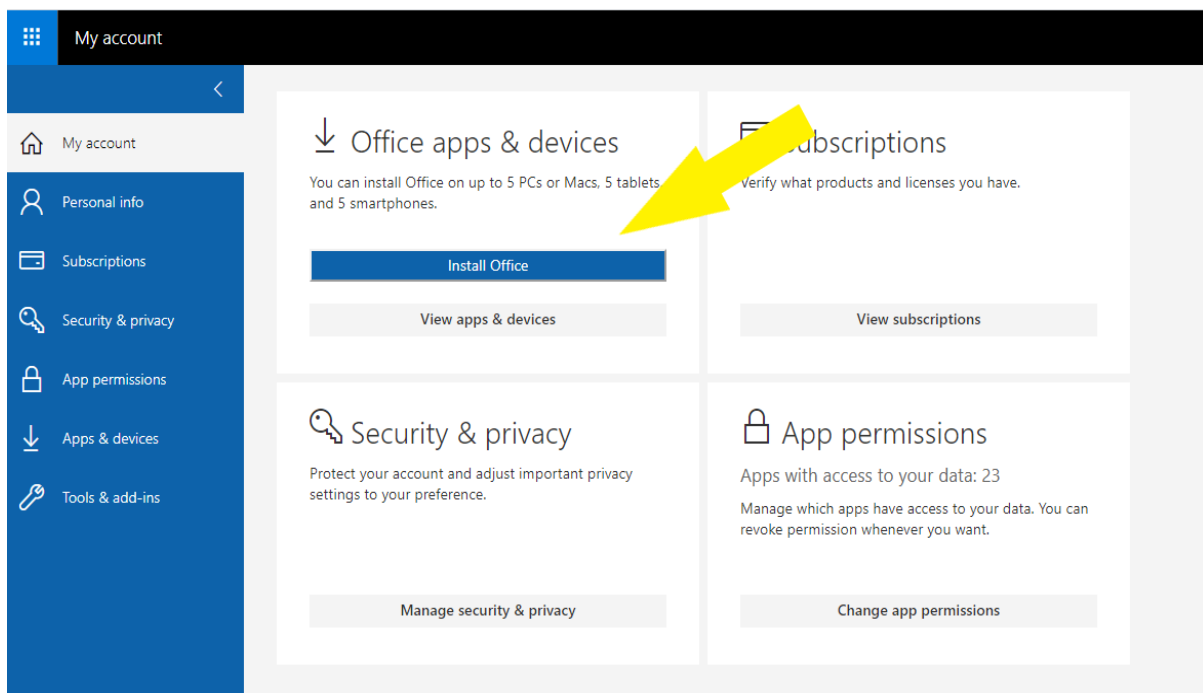
Step 3:

Once signed in, click on '**My account**'.



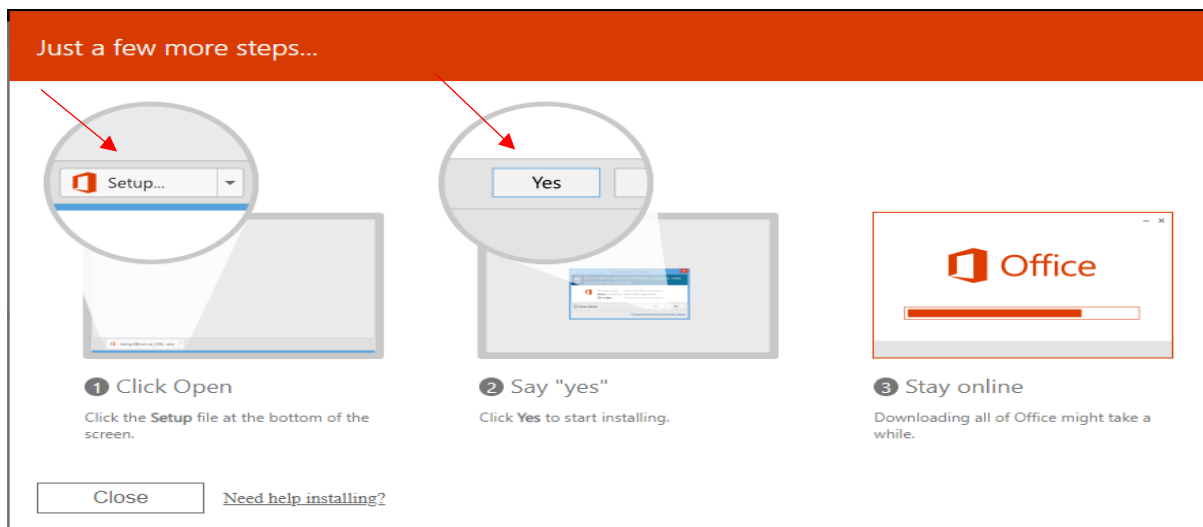
Step 4:

In the "My Account" section, click on '**Install Office**', the file will start downloading.



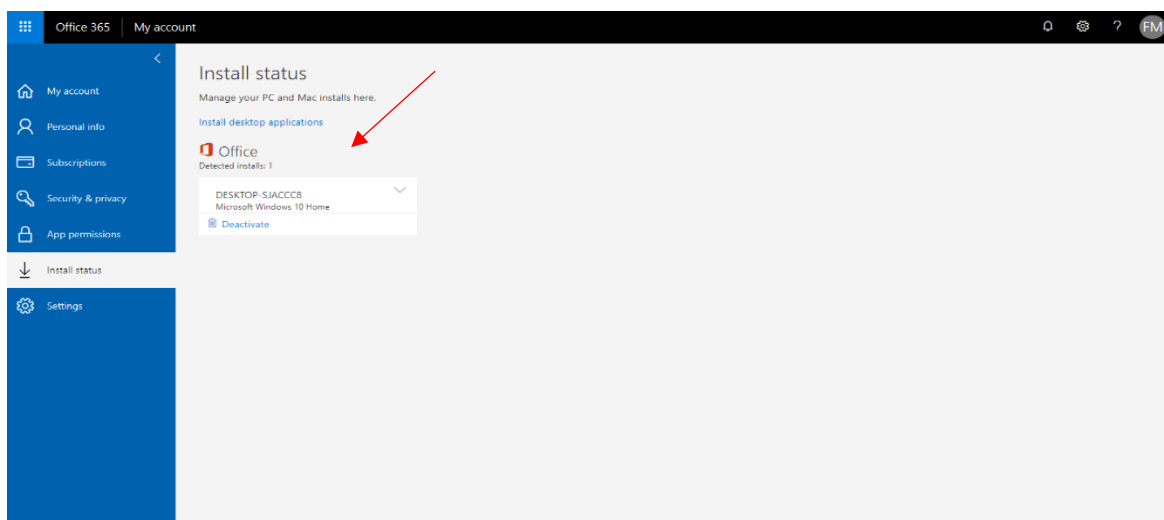
Step 5:

Once the file has finished downloading, press '**Setup**' and then '**Yes**'. The installation process will start automatically.



Step 6:

After installation, Microsoft Office will appear as activated on your student email account. You will also be able to see all Microsoft Office apps on the device you are using.



After downloading Microsoft Office, to login to any Microsoft Office app you will have to use your student email login details, e.g. abc123@student.aru.ac.uk and your e:Vision password

For more information or further assistance on Microsoft Office, please contact

learningresources@london.aru.ac.uk